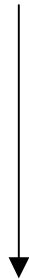
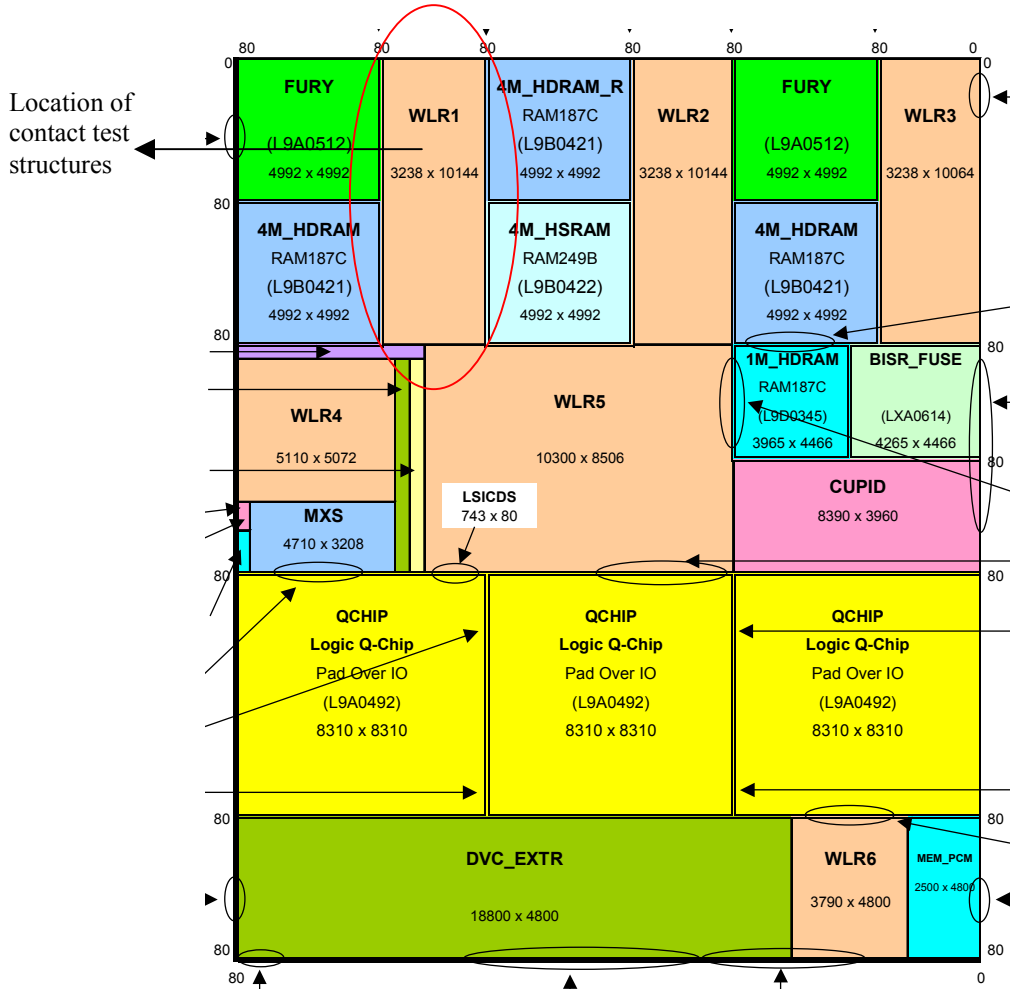
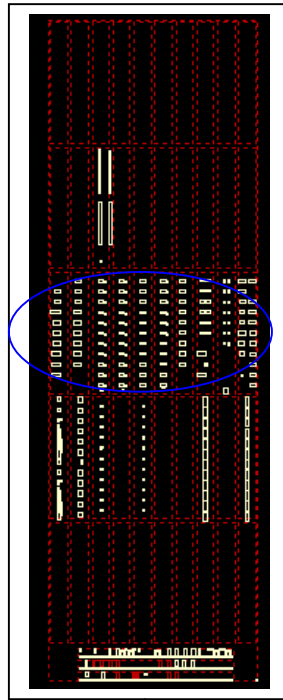


# Suggested Metrology Guideline



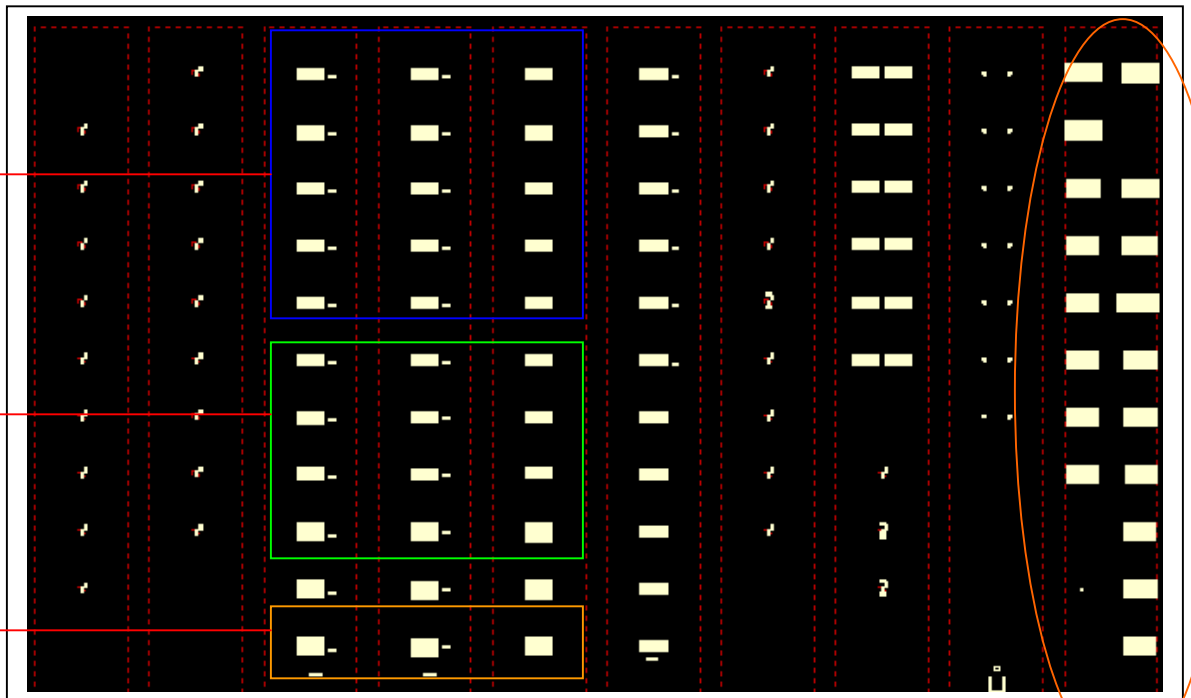
**Module containing contact structures (regions in white are contacts)**



0.15  $\mu\text{m}$   
contact arrays  
(contact space  
> 0.5  $\mu\text{m}$ )

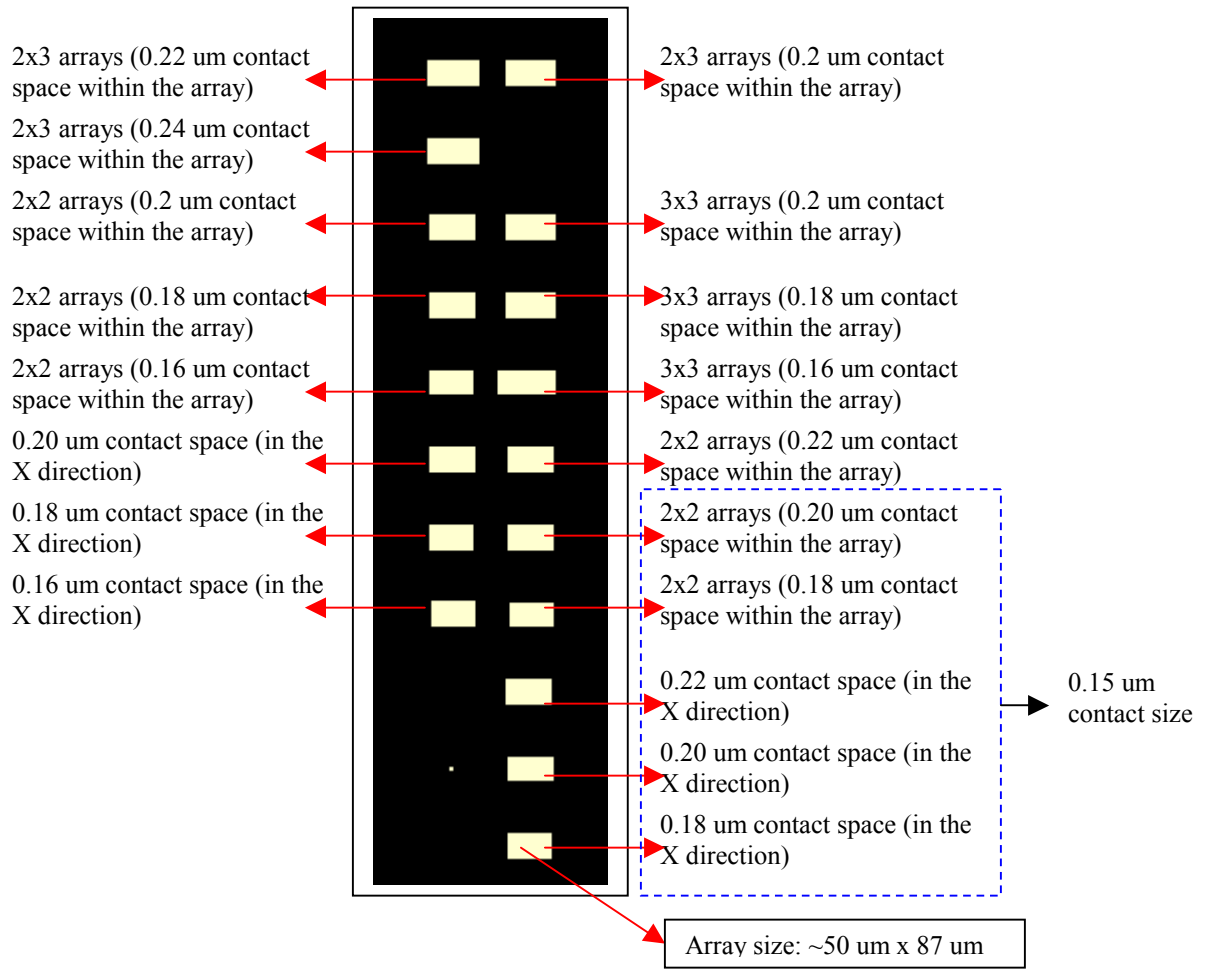
0.16  $\mu\text{m}$   
contact arrays  
(contact space  
> 0.5  $\mu\text{m}$ )

0.14  $\mu\text{m}$   
contact arrays  
(contact space  
> 0.5  $\mu\text{m}$ )

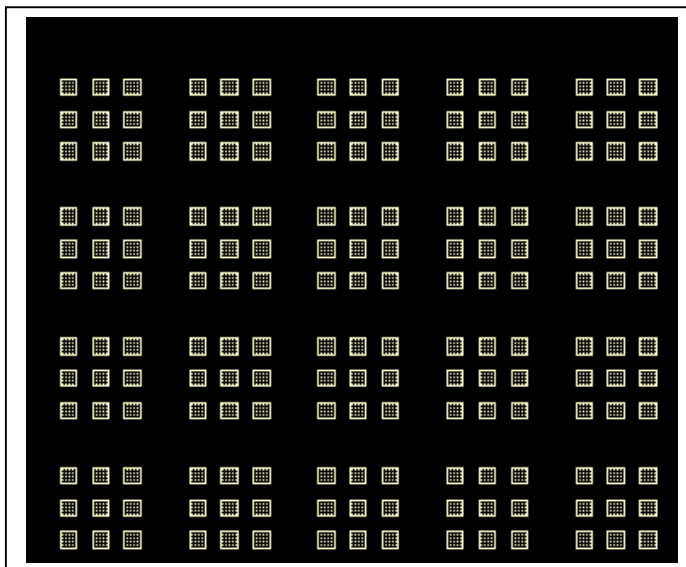


0.16 $\mu\text{m}$  contact arrays  
with variable size,  
space and density

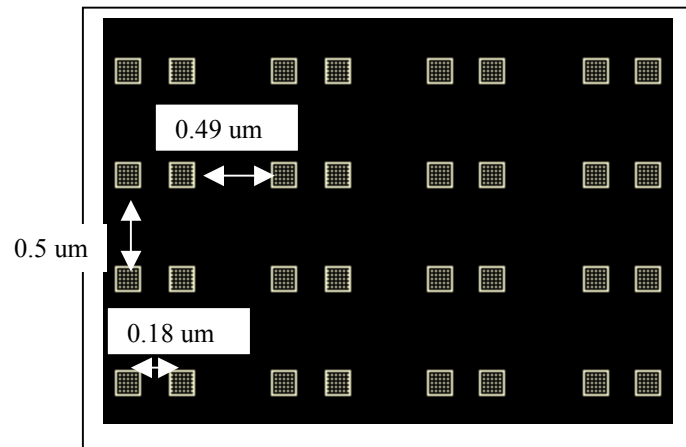
**Variable size, density arrays  
(contact size = 0.16  $\mu\text{m}$ , except for the structures marked)**



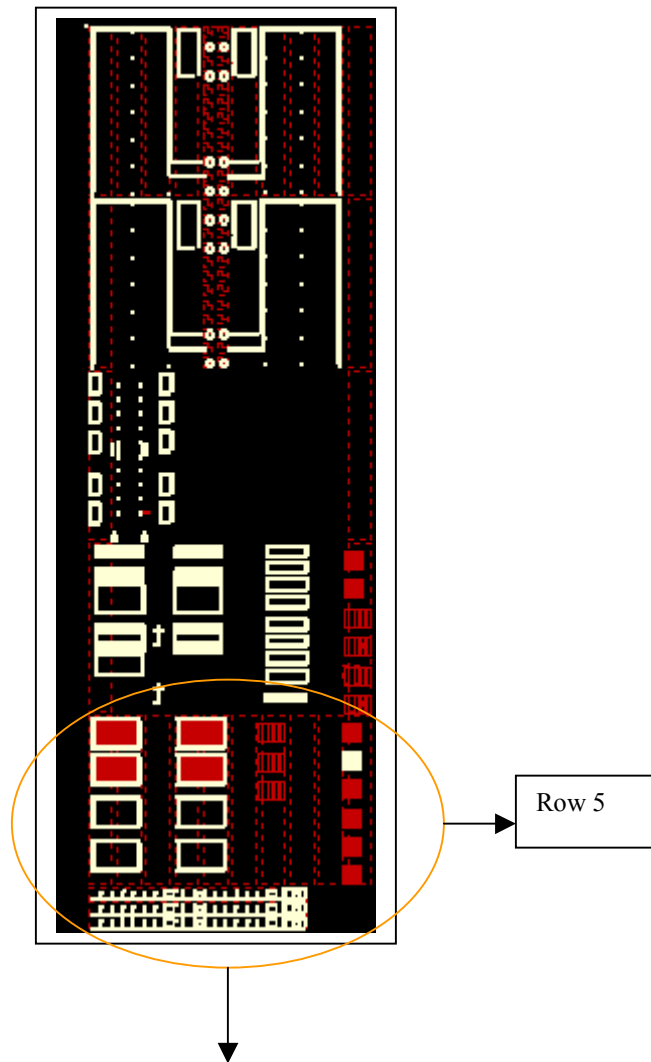
**Snapshot of a 3x3 array structure**



**Snapshot of array with 0.18 um contact space (X direction)**  
**Contact density: ~7.1%**



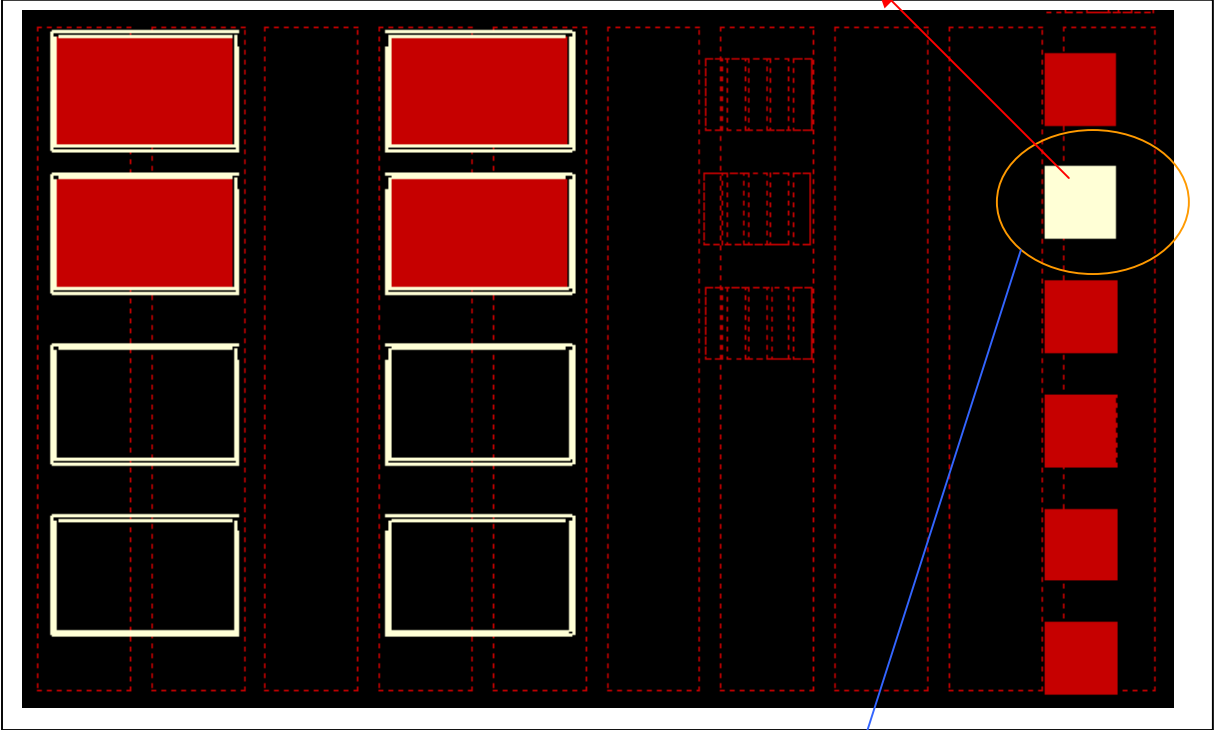
**Layout of WLR3**



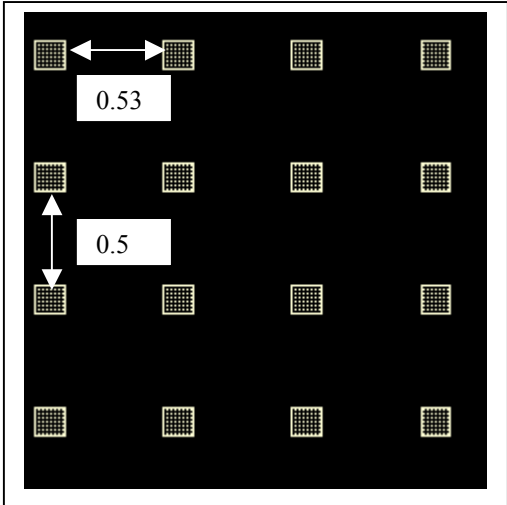
**WLR3 row 5**

Contact array for erosion measurement.  
Size: 200 um x 200 um

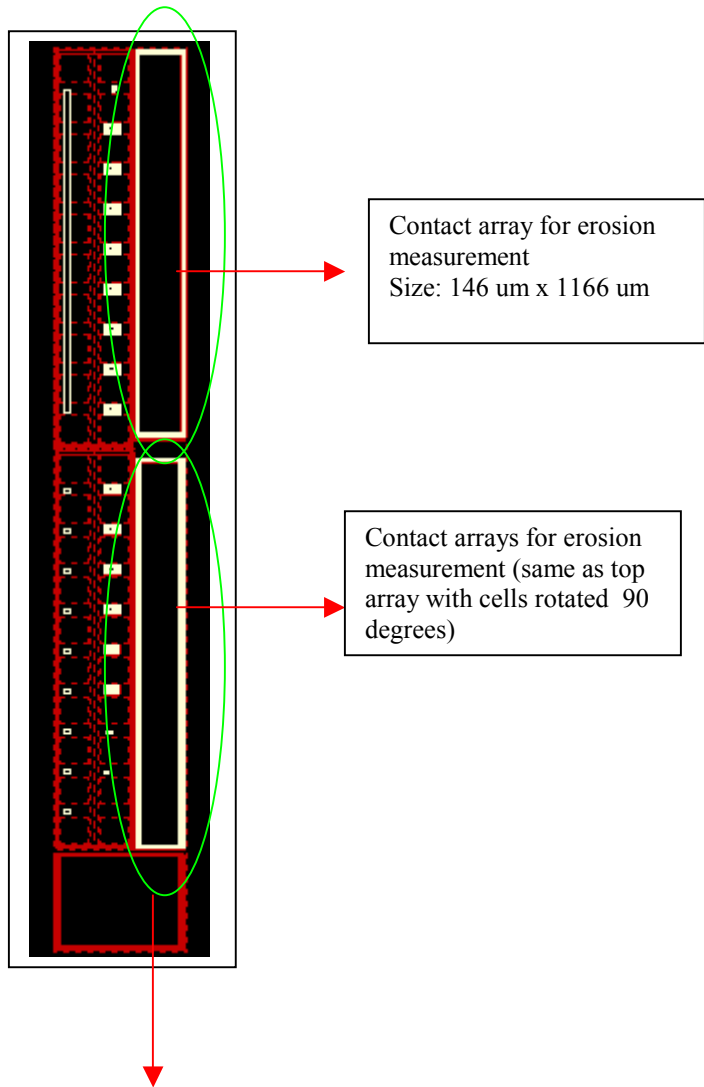
Column 4



**0.15 um contact array in col 4**  
**Contact density: 5.1%**



## Layout of MEM\_PCM2



**Snap shot of MEM\_PCM2 contact arrays**  
**Contact density: 11.4%**

